

# Apartment 6 Beechfield Albert Road

Wilmslow, SK9 5HT



*mosley jarman*



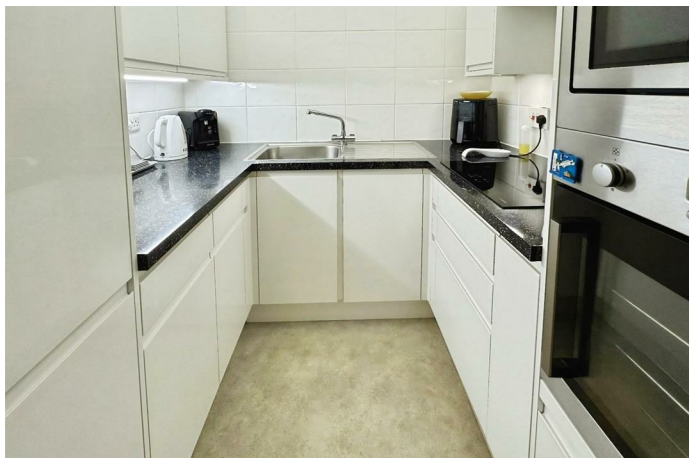
## Apartment 6 Beechfield Albert Road, Wilmslow, SK9 5HT

**£110,000**

A beautifully presented one-bedroom first-floor retirement apartment situated in a fantastic central location just a short stroll from Wilmslow town centre. The development offers a range of excellent facilities including lift access to all floors, a residents' lounge, telephone intercom system, onsite warden, communal laundry room, and a rubbish chute. There is also a residents' car park, with allocated parking spaces available for a nominal charge. The property benefits from double glazing throughout, electric storage heating and is offered for sale with no onward chain.

The accommodation comprises an entrance hallway with a useful storage cupboard, a spacious living and dining room, and a stylishly refitted kitchen featuring contemporary matching wall and base units along with integrated appliances including induction hob. The apartment also includes a double bedroom with fitted wardrobes and a modern bathroom with a walk-in shower and heated towel rail.

For added peace of mind, emergency pull cords are installed in the living room, bedroom, and bathroom. Within the development, a guest suite is also available for visiting relatives at a small charge.



- One-bedroom first-floor retirement apartment,
- Central Wilmslow location
- Stylish kitchen
- Resident lounge
- Communal gardens
- Beautifully presented throughout
- No onward chain
- Modern bathroom
- Residents parking available
- Leasehold- 125 year lease with approx. 85 years remaining



### The Grounds & Gardens

The development stands within attractive, private communal gardens which are laid to lawn and allocated parking for residents

### The Location

Wilmslow is a vibrant, sought-after town located in Cheshire, renowned for its blend of scenic beauty, excellent transport links, and a strong sense of community. Known for its high standard of living, Wilmslow offers a variety of shops, restaurants, and local amenities, making it a popular choice for families and professionals alike. The town is surrounded by picturesque countryside, including the nearby Bollin Valley, offering plenty of outdoor recreational opportunities. With its close proximity to Manchester, excellent schools, and easy access to Wilmslow train station, which provides direct routes to London, Wilmslow is a perfect balance of convenience and rural charm. Its attractive combination of lifestyle and location makes it one of the most desirable places to live in the region.

### Important Information

Council Tax Band: C  
EPC: TBC  
Heating - Electric

Mains - Electric, waters and drains

Property Construction- Brick built with tiled roof

Flood Risk: Very low risk of flooding from rivers & seas. Very low risk of surface water flooding.

Broadband<sup>\*\*</sup>: Openreach- FTTP (Fibre to the Premises). You may also be able to obtain broadband service from these Fixed Wireless Access providers covering your area for Virgin Media, EE & Three<sup>\*</sup>

Mobile Coverage<sup>\*\*</sup>: Mobile coverage at the property available with all main providers<sup>\*</sup>.

Rights of Way & Restrictive Covenants: TBC

Tenure: Leasehold 125 years. Approx. 85 years remaining.

Service Charge- £427.95 per Month

<sup>\*</sup> Information provided by GOV.UK

<sup>\*\*</sup>Information provided by Ofcom checker.

The information isn't guaranteed. Mosley Jarman take no responsibility for inaccuracies and advise potential buyers to do their own checks before committing to purchase.

Postcode: **SK9 5HT**

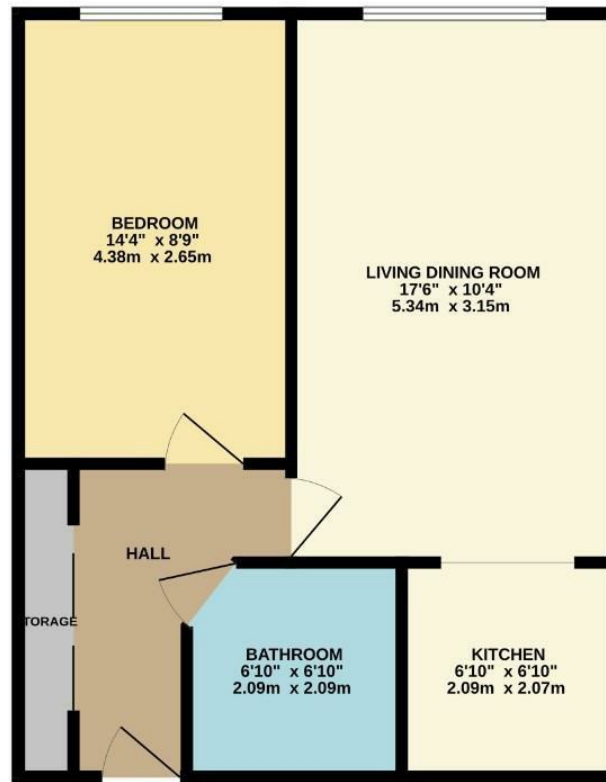
What 3 Words:

Council Tax Band: **C**

EPC Rating: TBC **B**

Tenure: **Leasehold**

GROUND FLOOR  
464 sq.ft. (43.1 sq.m.) approx.



TOTAL FLOOR AREA: 464 sq.ft. (43.1 sq.m.) approx.  
Whilst every attempt has been made to ensure the accuracy of the floorplan contained here, measurements of doors, windows, rooms and any other items are approximate and no responsibility is taken for any error, omission or mis-statement. This plan is for illustrative purposes only and should be used as such by any prospective purchaser. The services, systems and appliances shown have not been tested and no guarantee as to their operability or efficiency can be given.  
Made with Metropix ©2025

44 Alderley Road, Wilmslow, Cheshire, SK9 1NY

Email: [wilmslow@mosleyjarman.co.uk](mailto:wilmslow@mosleyjarman.co.uk)

T: 01625 444899  
[www.mosleyjarman.co.uk](http://www.mosleyjarman.co.uk)

*mosley jarman*

PROPERTY MISDESCRIPTIONS ACT 1991: The Agents has not tested any apparatus, equipment, fixtures and fittings, or services, so cannot verify that they are in working order or fit for the purpose. The buyer is advised to obtain verification from his or her Professional Buyer. References to the Tenure of the property are based on information supplied by the Vendor. The agents have not had sight of the title documents. The buyer is advised to obtain verification from their Solicitor. You are advised to check the availability of any property before travelling any distance to view.